

Triple Treat 2009

SPONSORS

Kucom Theatre gratefully acknowledges the assistance and support of:



Your one stop
SIGN SHOP

Ph. 4951 4633
Fax. 4953 4977
49 Gregory St. Mackay
admin@stickersandsigns.com.au
www.stickersandsigns.com.au



Taffy's Typing Service
ABN 65 767 116 741

the affordable alternative

RESUMÉS A SPECIALITY


Ph. 0419 756 840
E-mail: taffy@matilda.net.au
www.taffystyping.com.au

Relax

At RE/MAX Team Realty we take pride in our Professional Service, Care & Consideration.

While you relax, we will take care of Your Rental Property!

Phone 4969 1800



Kucom Theatre is proud to be associated as a Business Partner with 4MK-1026AM, Mackay



KUCOM THEATRE

proudly presents

Triple Treat 2010

A season of Australian one-act plays:

Ken Cotterill: *Lee*

Lucy Dobson: *Strictly Professional*

Chris Hodson: *Too Close for Comfort*

at 8pm on 14th, 16th, 17th, 21st, 23rd & 24th April
at the Kucom Playhouse, Shakespeare Street

Bookings: MECC 4961 9700
Other inquiries: 0408 980 022



Triple Treat 2019

THE DIRECTORS



SUE STOCK has been with Kucom for more years than she cares to remember, and has appeared in many productions including *And So Say All of Us*, *Blithe Spirit*, *Christmas Pudding*, *Fatal Attraction*, *Gosforth's Fete*, *Hay Fever*, *The Odd Couple* (female version), *Secret Bridesmaids' Business*, and most of the Farndale comedies. Sue's directing experiences include *Table Manners*, *The Dock Brief*, and the David Tristram comedies *What's for Pudding*, *Last Tango in Little Grimley* and *The Fat Lady Sings in Little Grimley*.



JIM KELLY is currently Vice President of Kucom Theatre. This is Jim's return to Kucom as director and actor since playing the role of George in *The Carer* in 2008. He directed *The Full Monty* in 2009 for Wasted Space Productions, and will direct the last play of the season for Kucom this year, *It's My Party (and I'll Die if I Want To)*. Also interested in Theatre Restaurant, Jim has plans afoot for a fantastic show for the end of this year for Wasted Space Productions.



LUCY DOBSON admits the decision to direct herself in her own play is based purely on selfish reasons. She had a strong vision as to how she wanted this play to be perceived and what she wanted from the character, and 'I didn't want to clash with somebody who might possibly have different ideas for the play'. Having sought advice/criticism from various friends and fellow acting peers, Lucy says: 'I thank them for the time and advice that they have selflessly given. It was difficult directing myself ... It has been a massive learning curve for me both as a performer and a director, but most importantly as a person. I love performing but now I have found a new passion in actually being the creative force behind the play. This has inspired me to want to continue on directing and I hope to do this again in the near future.'

What's Next at Kucom?

July

The Shoe-Horn Sonata, by John Misto
directed by Heather MacTavish

Kucom Theatre's contribution to the Mackay Festival of Arts
Season dates: 14, 16, 17, 21, 23 & 24 July

September

Death in the Limelight, by Claire Carmichael
a Kucom Youth Theatre Production
Season dates: to be advised

September/October

Kucom Club Night (date to be advised)

November

It's My Party (And I'll Die If I Want To)
a comedy by Elizabeth Coleman
directed by Jim Kelly
Season dates: 10, 12, 13, 17, 19 & 20 November

BOOKINGS: MECC 4961 9700
or book online through the Kucom website
<http://www.kucom.org.au/bookings.html>

KUCOM COMMITTEE 2010

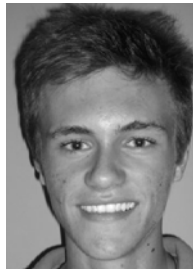
President	Sue Stock
Vice President	Jim Kelly
Secretary	Carolyn Thompson
Treasurer	John Atkinson
Committee	Sheryn Dempster
	Lucy Dobson
	Bronwyn Grannall
	Donna Kellion
	Russell Lowry
Email:	admin@kucom.org.au
Ph:	0408 980 022
Website:	www.kucom.org.au

Triple Treat 2010

THE ACTORS



John Atkinson



Connor Bashford



Sheryn Dempster



Lucy Dobson



Rowena Marshall



Bella Raymond



Geoff Stewart-Maclean

... AND THE REST OF THE CREW

Stage Manager

Sue Stock

Sound and Lighting

Jim Kelly

Front of House Coordinator

Russell Lowry

Media Liaison

Sue Stock

Program

Bronwyn Grannall

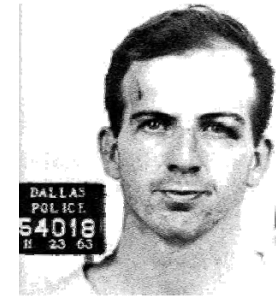
Taffy's Typing Service

Triple Treat 2010

Play 1:

Lee, by Ken Cotterill

Synopsis: Who killed the President?
Lee Harvey Oswald, the FBI,
or the CIA.? You decide.



Lee	Connor Bashford
Man	John Atkinson
Woman	Sheryn Dempster

Director: Jim Kelly

There will be a 15-minute interval following this play

The playwright:

KEN COTTERILL was born in Sheffield, South Yorkshire, and came to Australia in 1971. He began writing plays in 1984 when his local theatre group couldn't find a decent melodrama to perform. His most successful plays include: *Re-Electing Roger*, *Richard the Third's Revenge*, *Perfect Murder*, *Rhinoceros Hides*, *Lee*, *Children of the Levant*, *Cassowaries Don't Make Yen*, *Identity* and *Susan Pennington on Trial*. Ken has had plays produced all over Australia, the United States and England. Ken also acts and directs and currently works for the Queensland Department of Employment, Economic Development and Innovation as a web page writer and editor. He also writes the art column, *Art & About*, for *The Tablelander* newspaper and reviews plays for *Stage Whispers* magazine. He appears in *Who's Who in Queensland* (2008) and lives in Mareeba with his wife and two sons.



Triple Treat 2010

Play 2:

Strictly Professional, by Lucy Dobson

Synopsis: a light hearted comedy based on one woman's obsession for perfection. Theatre director Fern Adams spends every waking minute fretting about her inadequate cast - but the problem isn't the cast, it's Fern!



Fern Adams

Lucy Dobson

Director: Lucy Dobson

There will be a 15-minute interval following this play

The playwright:

LUCY DOBSON has always enjoyed writing, whether it be poetry, a screenplay or song lyrics. It is something she started doing at quite a young age. In her teenage years she would write a lot of poetry and song lyrics—a was a form of escape, and also another creative outlet. Lucy has always been fond of performing and would certainly love to do that on a professional level, but has really started to expand on her writing. These last few years she has concentrated her writing mainly on a couple of non-fiction books and a musical. Until now, she has always regarded these as mostly a hobby—but after being fed up with waiting for a role to come to her, she has decided to create one for herself. A little a bit of trivia - Lucy is also a fellow Pom, like the other two playwrights!



Triple Treat 2010

Play 3:

Too Close for Comfort, by Chris Hodson



Synopsis: Suzie has travelled the world and has returned from her latest trip with 'the most wonderful man I've ever met'. Her parents, Roger and Dawn, have to admit that this time Suzie has found her perfect match. But is there such a thing as too perfect?

Roger
Dawn
Suzie
Adrian

Geoff Stewart-Maclean
Rowena Marshall
Bella Raymond
Connor Bashford

Director: Sue Stock

The playwright:

CHRIS HODSON has called Australia home since migrating from Leicestershire in 1963 at the age of 14. Bitten by the acting bug at 40-plus, he began to write one-act plays for his local theatre, the Sherbrooke Theatre Company (Victoria). *Too Close for Comfort* is the first of a trilogy titled *Take Your Partners*, which also includes *Washed-up Wednesday* and *Pheromone Frenzy*. Other one-act plays include *Phantom Call*, *No Chocolates by Request*, *A Fete Worse Than Death*, and *You Never Walk Alone*. The trilogy *Hatched, Matched and Dispatched* includes: *How Green Was My Baby*, *Something Old, Something New*, and *Dust to Dust*. He has also written a two-act play, *Set the Traps*. Chris says: 'I love to observe people on all levels and develop rich and multi-layered characters for my plays. My greatest reward is to hear people say how much they recognise people they know in my characters - even themselves.'

